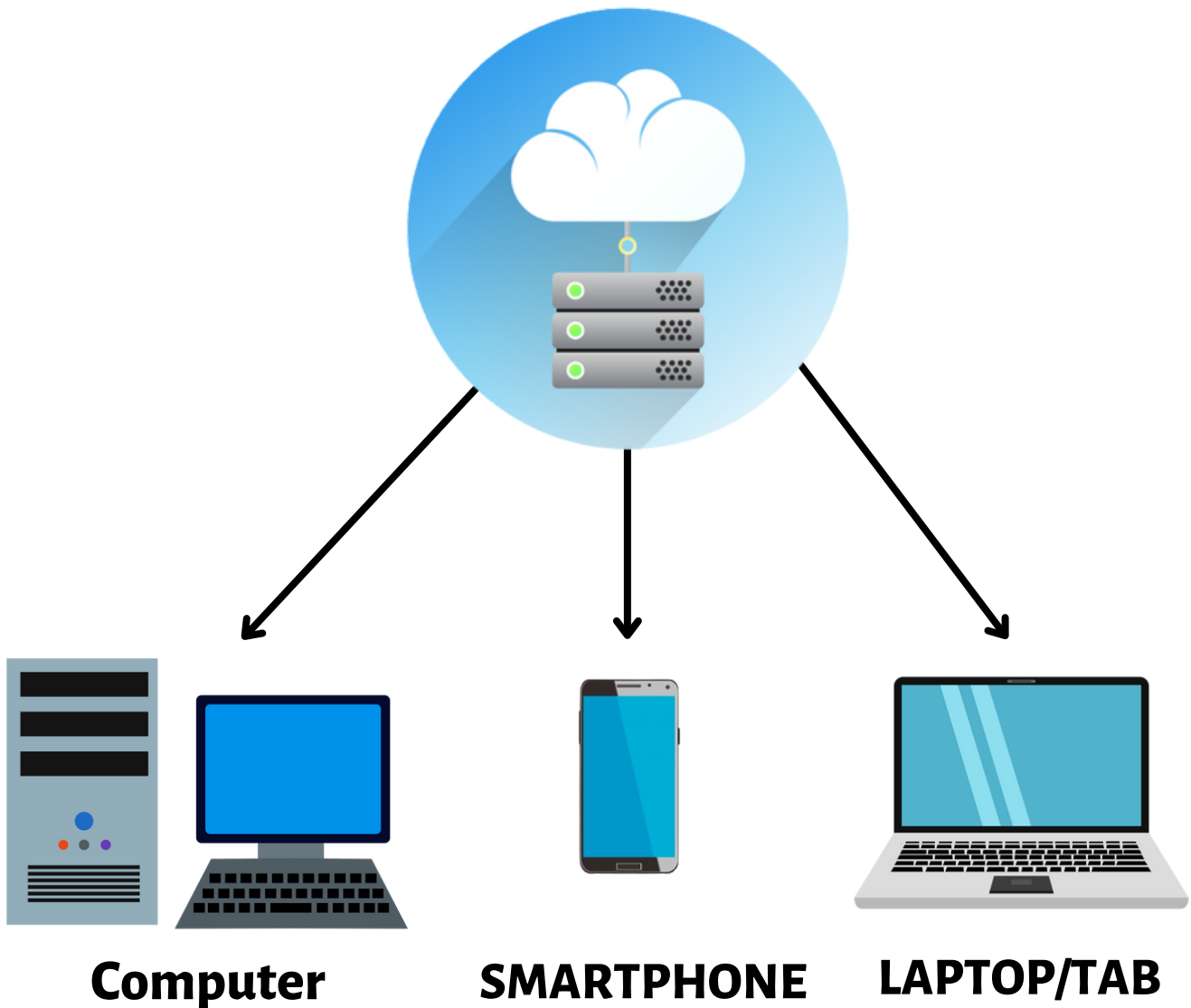




# AdvanceTech India

All The Technology You Need!

## Cloud Server Details

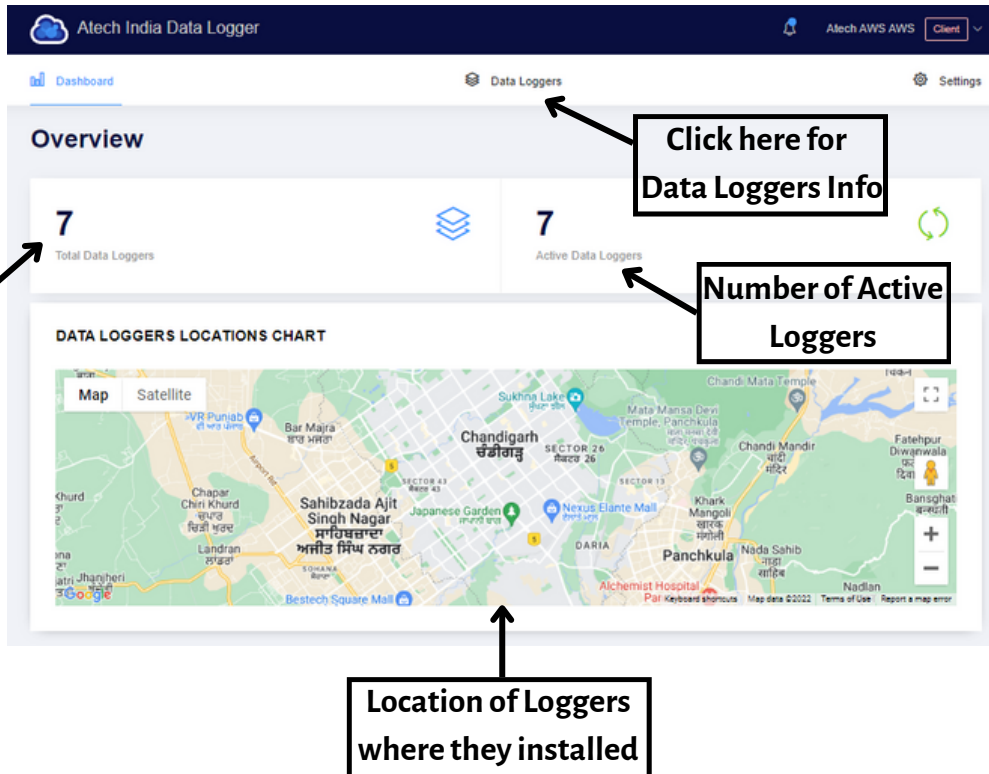


SCO -8 , Ajit Enclave , Kalka -Shimla Highway, Dhakoli Zirakpur,  
Punjab 140603 India

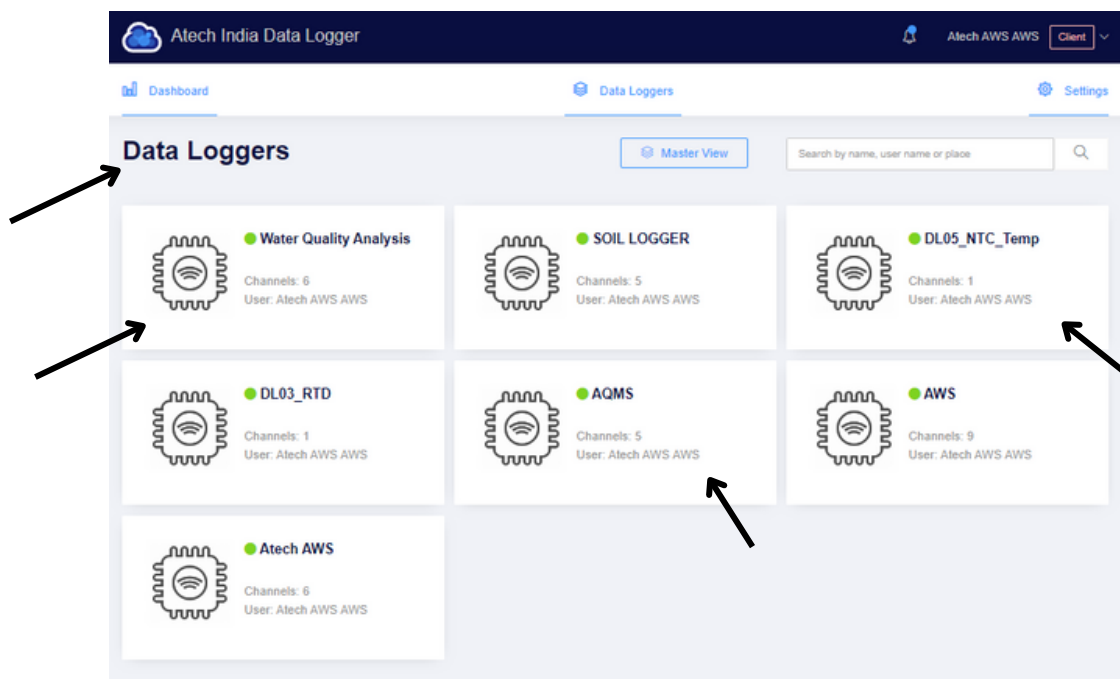
+91 8587996986

[www.atechindia.com](http://www.atechindia.com)

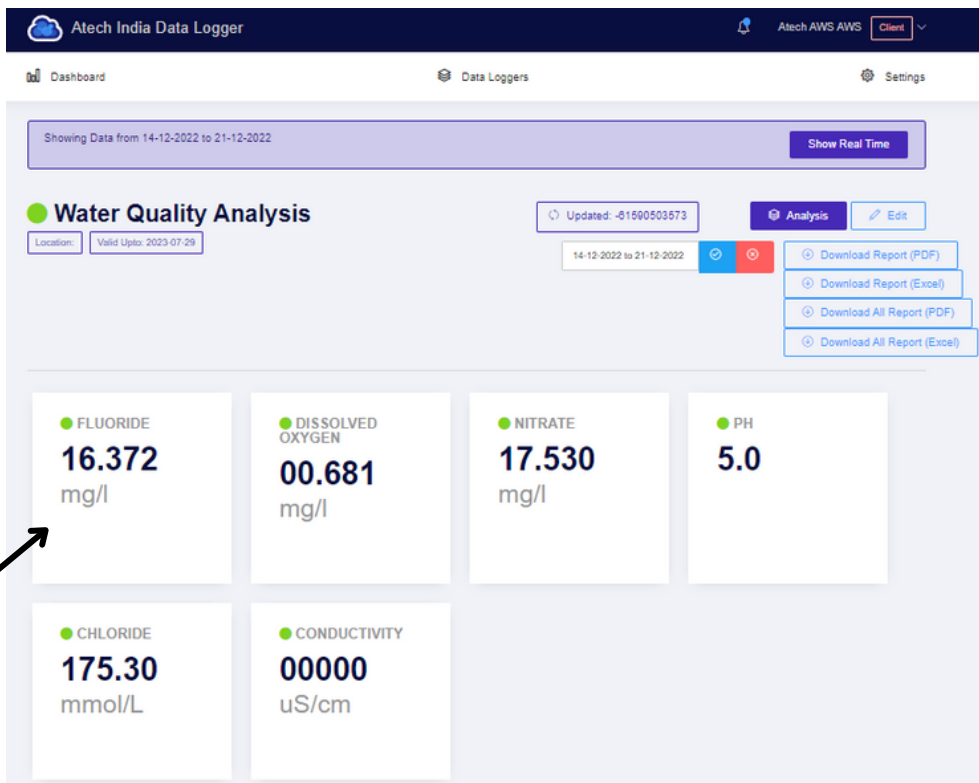
# Cloud Dashboard



**This is a front Dashboard of our Cloud Server. On this page, you will get to know about how much total number of Data loggers are Installed and how many are active from them. Also, you can check the location of Data loggers for where they are installed on the Map.**



**After clicking on the Data Loggers option you will redirect to this page where you can open and check any of your logger's Data particularly.**



Readings

After clicking on the Data Logger's name option you will redirect to that particular logger to check and monitor their readings. In this you can check your Data Logger's readings in many types like Chat View, Table View etc.

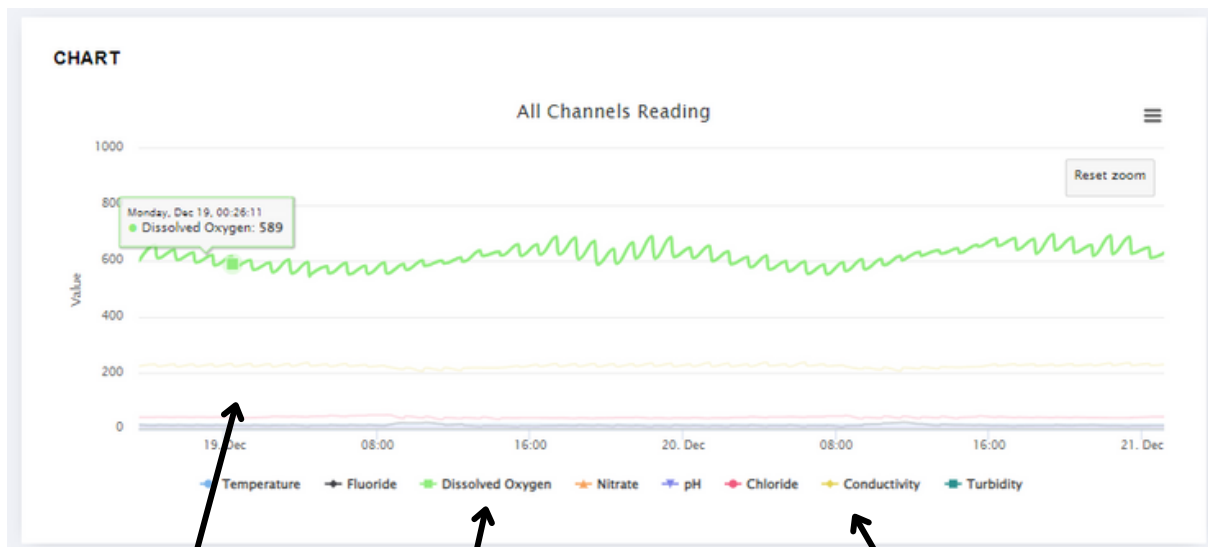


Chart Readings View

Parameters

Here You can check your data in a chart view of all the parameters.

Show 10 entries

Copy CSV Excel PDF Print Column visibility

Date	Temperature	Fluoride	Dissolved Oxygen	Nitrate	pH	Chloride	Conductivity	Turbidity
21-12-2022 11:38	19.4 °C	19.1 ppm	00604 mg/ml	00.09 ppm	8.17	044.39 ppm	00216 us/cm	0.00216 Ntu
21-12-2022 11:32	19.3 °C	18.5 ppm	00615 mg/ml	00.09 ppm	8.16	040.20 ppm	00206 us/cm	0.00206 Ntu
21-12-2022 10:38	19.2 °C	22.0 ppm	00601 mg/ml	00.07 ppm	8.16	047.38 ppm	00218 us/cm	0.00218 Ntu
21-12-2022 10:32	19.0 °C	24.0 ppm	00613 mg/ml	00.08 ppm	8.15	044.31 ppm	00210 us/cm	0.00210 Ntu
21-12-2022 9:38	18.7 °C	17.5 ppm	00582 mg/ml	00.09 ppm	8.15	047.55 ppm	00222 us/cm	0.00222 Ntu
21-12-2022 9:32	18.6 °C	17.0 ppm	00614 mg/ml	00.10 ppm	8.13	043.59 ppm	00220 us/cm	0.00220 Ntu
21-12-2022 8:36	18.5 °C	11.5 ppm	00569 mg/ml	00.07 ppm	8.10	051.25 ppm	00226 us/cm	0.00226 Ntu
21-12-2022 8:32	18.4 °C	10.0 ppm	00599 mg/ml	00.07 ppm	8.09	050.53 ppm	00231 us/cm	0.00231 Ntu
21-12-2022 7:38	18.4 °C	12.6 ppm	00568 mg/ml	00.07 ppm	8.10	048.59 ppm	00229 us/cm	0.00229 Ntu
21-12-2022 7:32	18.3 °C	11.3 ppm	00592 mg/ml	00.07 ppm	8.06	047.63 ppm	00236 us/cm	0.00236 Ntu

Showing 1 to 10 of 518 entries

Previous 1 2 3 4 5 ... 52 Next

readings in Table view

Here You can check all Readings in a chart view of all the parameters. You can also view older data from the down side page page buttons.

Atech India Data Logger

Dashboard Data Loggers Settings

Showing Data from 14-12-2022 to 21-12-2022

Show Real Time

Water Quality Analysis

Updated: -61590503573

14-12-2022 to 21-12-2022

Download Report (PDF)

Download Report (Excel)

Download All Report (PDF)

Download All Report (Excel)

FLUORIDE 16.372 mg/l

DISSOLVED OXYGEN 00.681 mg/l

NITRATE 17.530 mg/l

PH 5.0

CHLORIDE 175.30 mmol/L

CONDUCTIVITY 00000 uS/cm

On this page, you can also download the data readings date-wise in many forms like excel, Pdf, etc.

Here you will also get an Analysis Button option where you can analyze your Readings Data.

Show 10 entries

Copy CSV Excel PDF Print Column visibility

Date	Temperature			Fluoride			Dissolved Oxygen			Nitrate			pH			Chloride		
	Min (°C)	Max (°C)	Avg (°C)	Min (ppm)	Max (ppm)	Avg (ppm)	Min (mg/l)	Max (mg/l)	Avg (mg/l)	Min (ppm)	Max (ppm)	Avg (ppm)	Min (l)	Max (l)	Avg (l)	Min (ppm)	Max (ppm)	Avg (ppm)
17-08-2022	31.7	31.9	31.8	22.5	22.9	22.7	652	712	682	25.9	25.9	25.9	77.1	81.3	79.2	0	0	0
11-11-2022	0	82.9	26.044	0	82.9	8.426	0	525	479.222	0	5.17	0.777	5.39	8.68	8.135	0	335.39	28.599
12-11-2022	26.1	28.1	26.57	1.5	13.4	2.368	486	555	520.3	0.02	0.03	0.02	8.13	8.3	8.218	0	41.97	30.49
13-11-2022	24.2	27.3	25.917	1.7	3.6	2.663	493	608	528.483	0.02	0.03	0.022	8.14	8.32	8.199	25.82	51.06	40.142
14-11-2022	24.3	26.8	25.455	1.4	4.7	2.333	525	634	564.411	0.02	0.03	0.021	8.16	8.46	8.27	16.06	41.99	27.185
15-11-2022	24.4	26.8	25.197	2.3	4.8	2.664	514	623	555.528	0.02	0.03	0.02	8.12	8.46	8.245	17.86	33.82	26.061
16-11-2022	24	27.2	25.006	2.3	6.6	2.947	526	639	566.139	0.02	0.04	0.024	8.17	8.49	8.285	16.27	30.16	24.88
17-11-2022	23.8	26.3	24.7	1.9	3.6	2.649	534	662	579.056	0.01	0.04	0.022	8.17	8.56	8.335	17.28	38.06	26.062
18-11-2022	23.1	26.2	24.403	2	3.1	2.592	532	661	573.859	0.02	0.04	0.025	8.14	8.52	8.288	14.52	35.59	26.509
19-11-2022	22.9	25.4	24.106	2	4.4	2.852	512	639	561.077	0.02	0.05	0.028	8.05	8.39	8.173	17.03	53.99	29.821

Showing 1 to 10 of 39 entries

After clicking on Analysis you will redirect to this page, here you can analysis your data date-wise and also minimum, maximum and average reading of the day.

Atech India Data Logger

Atech AWS AWS Client

Dashboard Data Loggers Settings

Showing Data from 14-12-2022 to 21-12-2022

Show Real Time

Water Quality Analysis

Updated: -81590503573

Analysis Edit

Location: Valid Upto: 2023-07-29

14-12-2022 to 21-12-2022

Download Report (PDF)

Download Report (Excel)

Download All Report (PDF)

Download All Report (Excel)

FLUORIDE  
16.372 mg/l

DISSOLVED OXYGEN  
00.681 mg/l

NITRATE  
17.530 mg/l

PH  
5.0

CHLORIDE  
175.30 mmol/L

CONDUCTIVITY  
00000 uS/cm

On the Right-Top of the page will get a settings button from where you can change the settings of your Cloud Dashboard.

## User Settings

First Name	<input type="text" value="*"/>
Last Name	<input type="text" value="****"/>
Email	<input type="text" value="*****@.com"/>
Mobile	<input type="text" value="*****"/>

---

New Password	<input type="password" value="Password"/>
--------------	---

**After Clicking on the settings button you will be redirected to this settings page where you can change the Name, Email, Mobile No., and password of the cloud.**

## Report Settings

Format	<input type="text" value=""/>
<small>For Logger Reports (when downloaded or sent via email) Excel: will generate feed based report PDF: will generate analysis based report</small>	
Analysis Calculation	<input type="text" value=""/>
Send Me Reports via email	<input type="text" value="Never"/>
Select Report Type	<input type="text" value="Please Select"/>

## ADD CC Mail For Send Report

Enter Mail	<input type="text" value="Please Write Correct Email Format"/>	<input type="button" value="Add Email"/>				
<table><thead><tr><th>Email</th><th>Action</th></tr></thead><tbody><tr><td> </td><td> </td></tr></tbody></table>		Email	Action			<input type="button" value="Update cc mail"/>
Email	Action					

**When you scroll down there you will get report settings from where you can change the report sending E-Mail. You can also add multiple emails to share reports automatically on the E-Mails.**