



AGRI, ENVIRONMENT & INDUSTRIAL AUTOMATION SOLUTIONS

SENSE

MONITOR

ANALYZE

ALERT

AIR QUALITY MONITORING

ENVIRONMENTAL MONITORING

SOIL HEALTH MONITORING

APPLICATION BASED DATA LOGGING

LIVE VIDEO WALL DISPLAY

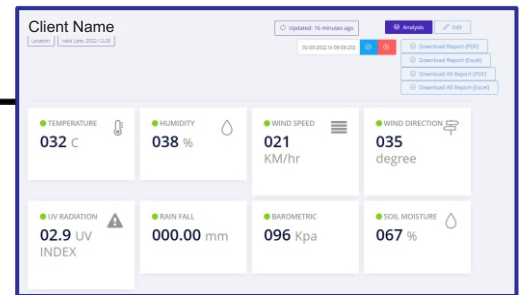
ANALYTICAL CLOUD DASHBOARD



Local PC Dashboard & Alert System

Live Video Wall Display

Online Cloud Dashboard



Air Quality Monitoring System

Measure Multiple Parameters like Co2, CO, So2, No2, PM2.5, Pm10, AQI, Noise level etc. Display live readings on Cloud dashboard, video wall or mobile app & get alerts.

Automatic Weather Station

Sense Temperature, Humidity, Wind Speed / Direction, Rainfall, Solar Radiation, Level, Snow-depth, Salinity, Evaporation, Leaf Wetness, etc. get Centralized Data Through GPRS/ GSM/ Modbus/ USB on our Customized Software.

Application Based Data Logger

Temperature / Humidity Based Data loggers, Cold room Monitoring, Soil Health Monitoring Logger, Blood Bank Monitoring & Alert System, Intrusion Detection System.



8587996986, 9815036923

atechindia.com

atechindia@gmail.com



WEATHER MONITORING STATION



PARAMETERS

Radar Water Level

Level Sensor

Temperature

Wind Speed

Wind Direction

Humidity

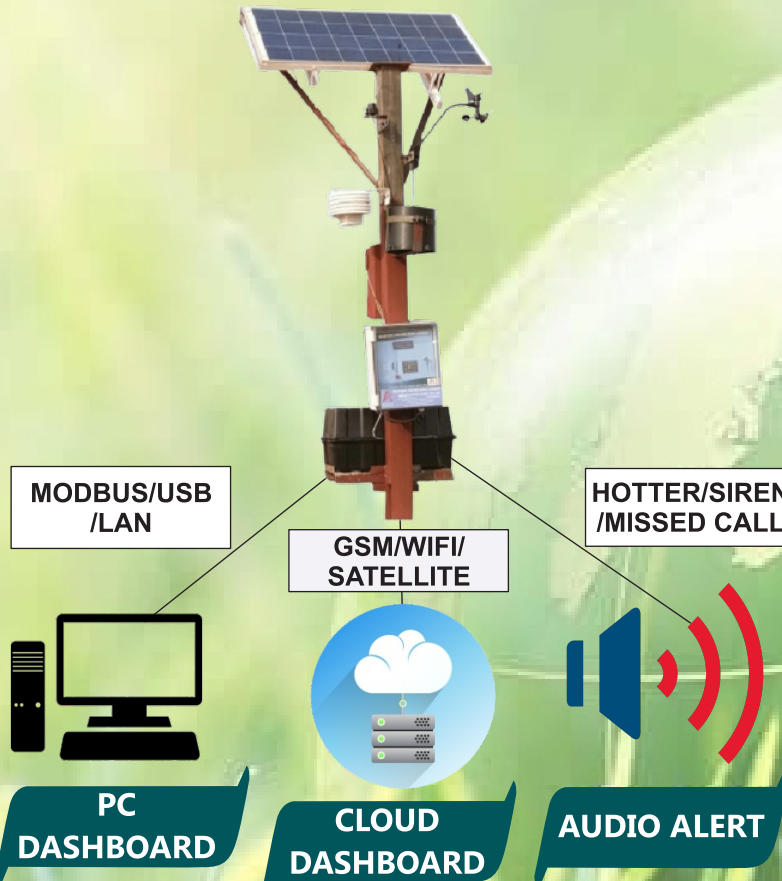
Solar Radiation

Pan Evaporation

Leaf Wetness

Snow Depth

Precipitation



SPECIFICATIONS

8/16/32 Channels.

Inputs

- Analog, Digital /
- 4-20 mA, 0-5V

Communication Protocol

- Rs232/Rs485/LAN
- Modbus/GSM/LORA

Data Retrieval & Display

- Local PC Dashboard
- Online Cloud Dashb.
- SMS, Missed Call Alert
- USB/SD Card
- Mobile APP.
- Video Wall

Hardware Features

- LCD display
- HEX Keyboard
- SafetyLock
- Weather proof
- Enclosure(IP65)
- Customizable Sample Rate

Power Source

Mains/Battery/Solar Power

DATA LOGGING SOLUTIONS



Record, Monitor & Alert

- > Cold Storage
- > Temperature / Humidity
- > Soil Health
- > Blood Bank
- > Air Quality
- > Intrusion Detection
- > Process Monitoring
- > Deep Freezer
- > Flow Monitoring
- > Flame proof Environment
- > Research Activity Data Analysis



Specifications

1/2/4/8 Channels.

Inputs

- Analog, Digital /
- 4-20 mA, 0-5V

Communication Protocol

- Rs232/Rs485/LAN
- Modbus/GSM/LORA

Data Retrieval & Display

- Local PC Dashboard
- Online Cloud Dashb.
- USB/SD Card
- Mobile APP.

Hardware Features

- LCD display
- Switch ON/OFF, LED
- Enclosure(IP65)

Alert

- Buzzer/Audio Alarm
- SMS/Missed Call Alert
- LED Blinking

Power Source

- Mains/Battery

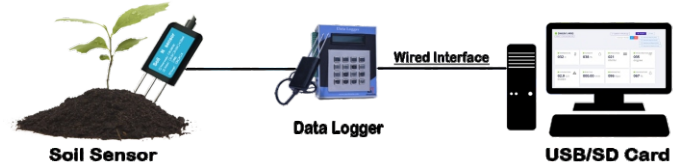
Agriculture Automation Solutions

PolyHouse Automation



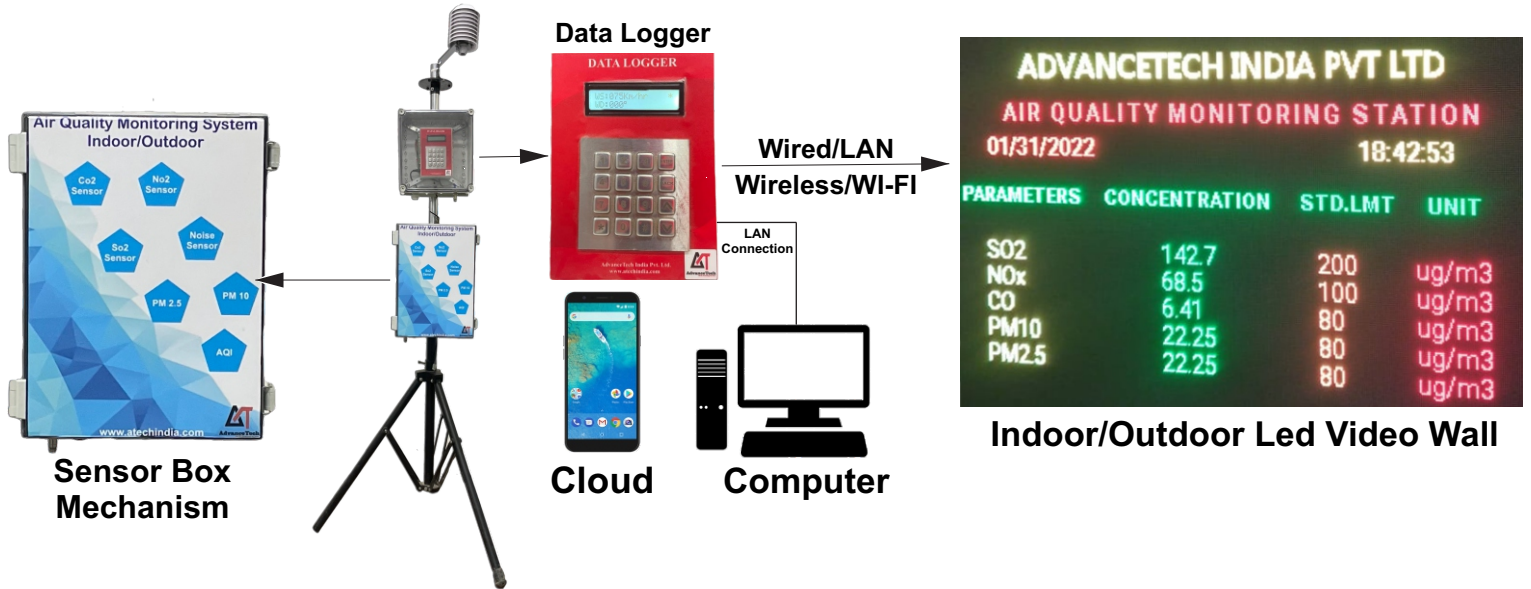
- Complete automation and control of PolyHouse parameters.
- 2 way control mechanism for smart switching of sensors
- Record the data for analytical comparison
- Transform the polyhouse with Latest solution

Soil Health Monitoring



- Monitor Soil Quality - Soil Pressure, Temperature, Moisture, NPK, Conductivity etc.
- Sense, Monitor and Control The sensors via mobile app, cloud dashboard

Air Quality Monitoring System



- Monitor multiple Air Gases , Air Quality
- 8, 16 , 32 Channel Data Logger , Analog/Digital/4-20 ma Input
- Wired Interfaces -USB/LAN/Modbus/SD Card
- Wireless Interface - GSM/GPRS/WI-FI/LORA
- Alert Mechanism SMS, Audio , Missed Call , Hooter
- Display live readings on a video wall
- Pole Mounting and Ip65 Weather Proof Protection

Video Wall Specs

- P4/P6/P10 Pixels Pitch
- Size 3x2, 6x4, 8x4 (FT)
- Multicolor, Multi Language Data insertion
- Ip65 Protection with Pole Mount/Wall Mount Provision
- Customize your video wall by Inserting Text, Images, Video, Weather, Date & Time

Industrial Automation

- ★ PLC/Scada Based Automation
- ★ Production Line Monitoring & Display
- ★ Monitoring & Control of All IoT Device
- ★ Online Cloud / Software Application
- ★ Live Head Counting System
- ★ Live Metering & Indication System

Shift Management & Efficiency Solutions



Warehouse Intrusion Alert System



Glimpse of our Installation



AdvanceTech India

Phone : 9815036923, 8587996986

Email : atechindia@gmail.com

Website: www.atechindia.com

