

# ATM-DL-03RL

# Data Logger/IOT Gateway

## Introduction

- Data Logger feature latest technology support and helps in logging physical parameter of multiple sensor and save it into SD / memory card and transfer data on cloud and other servers. It can log data from interval of 1 sample/min to 1 sample/hour.

## Specification

- **Channel** - 8 Analog Channels & 2 Digital Channel
- **Interface** - Analog / digital /4- 20 mA / 0-5V input ports./ Modbus
- **communication** - Rs232/Rs485/ SDI-12/Interfacing communication port.
- **Display** - 16x2 LCD user interface display
- **Configuration** - Logging option configuration by minutely, hourly, Daily
- **Software** - GUI software for display the channel and to manually set rate for the sample and hold the channel number.
- **Memory** - on-board flash memory (Non- volatile) Around 1,000,000 Sets SD card storage facility available (8GB to 32GB Expandable)
- **Data Download** - Data Download via Remotely & Cable
- **Data Communication** - Modbus RTU/TCP Data, FTP, SFTP, SMTP, SAP, MQTT, http, RMAP
- **Remote configuration** - Remote configuration via FTP Server & LAN
- **SMS Facility** - SMS Facility to min 6 no onwards , along with alerts enquiry modes
- **Remote Communication** - 4G/GSM/GPRS /wifi Facility, Ethernet, Wireless Router, optional Satellite interface available (Remote Communication)
- **Pole** - 4-meter Tilttable pole
- **Enclosure** - Size table top Enclosure: Hand Held / Wall mountable / Weather proof (IP65)



Data Logger



Enclosure (IP65)

AdvanceTech India Pvt Ltd

Head Office

Sco -8 , Ajit Enclave, Kalka - Shimla Highway Landmark: Near City Palace ,  
Dhakoli Zirakpur, Distt- S.A.S Nagar, Punjab-140603

[www.adrtechindia.com](http://www.adrtechindia.com)



Advantech  
All The Technology You Need

# ATM-DL-03RL

# Data Logger/IOT Gateway

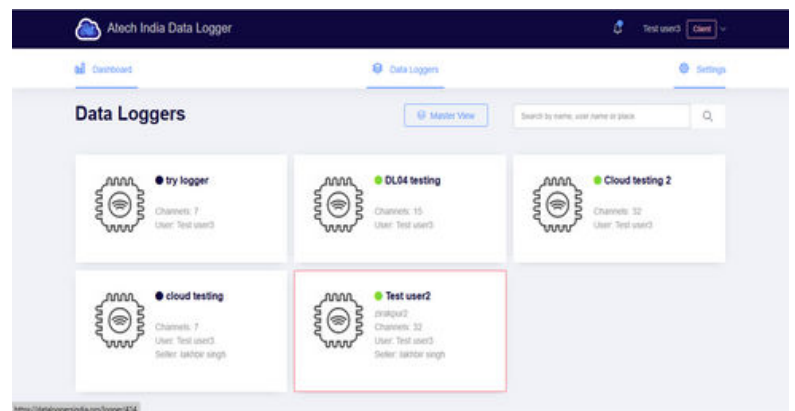
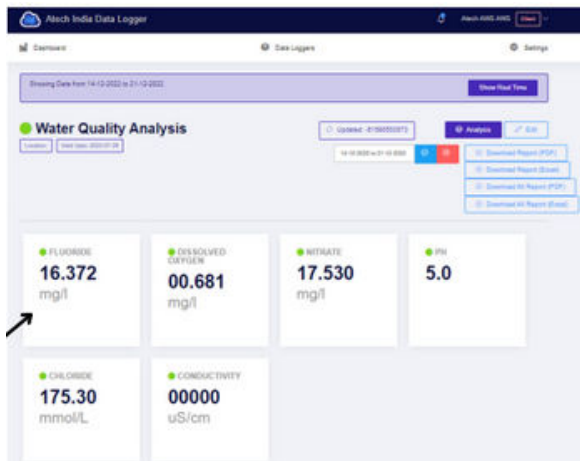
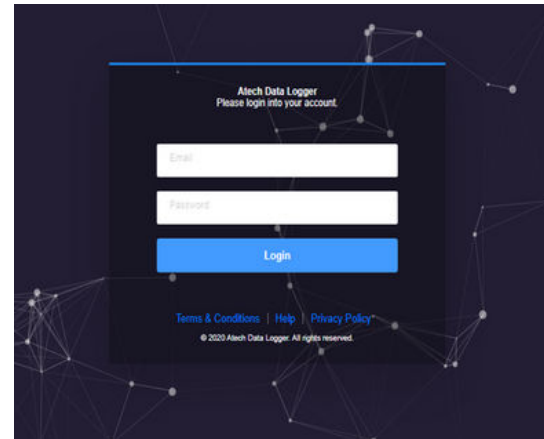
## Other Specification

- Battery indicator
- Lock key facility
- Facility for Mains or solar panel from 50 / 12 volt watts onwards powering
- Facility to interface hydrological metrological / acoustical velocity discharge sensors etc.
- 4x4 metal Hex keyboard to set the various parameters, to configure the channel



## Cloud Details: -

- PC based Monitoring/reporting
- Facility for Mobile Application
- Cloud-based applications
- Query-based reporting
- We also offer a large display for Indoor/Outdoor display for Live Monitoring.
- check the location of Data loggers for where they are installed on the Map
- check your Data Logger's reading sin many types like Chat View, Table View etc.
- download the data readings date-wise in many forms like excel, Pdf, etc.



# ATM-DL-03RL

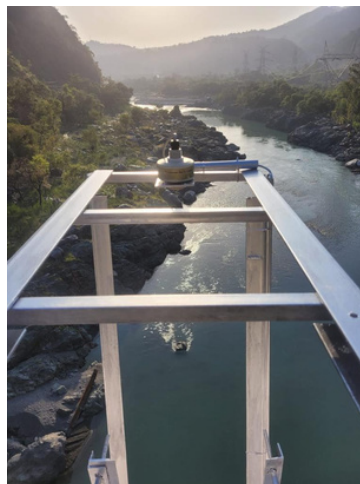
# Data Logger/IOT Gateway

## APPLICATIONS OF DATA LOGGER

- Radar water Level monitoring
- Micro and advance weather stations.
- Soil health monitoring Moisture, Temp & EC
- Poly house automation & monitoring.
- Cold room automation solutions Blood Bank Refrigeration Systems
- Grain storage automation solutions

## SENSOR / SIGNAL CONDITIONER FOR DATA LOGGER

- Radar Water level sensor
- Sensors / Signal conditioners
- Environmental sensors ( temp / hum/ etc )
- Gas sensors CO<sub>2</sub>, O<sub>2</sub>, NO<sub>2</sub>, SO<sub>2</sub>, PM<sub>2.5</sub>, etc
- Automobile sensors Water quality ( PH, TDS, DO, BOD, COD, etc)
- Force torque acceleration Any other sensor , and their calibration.



Readings on data logger